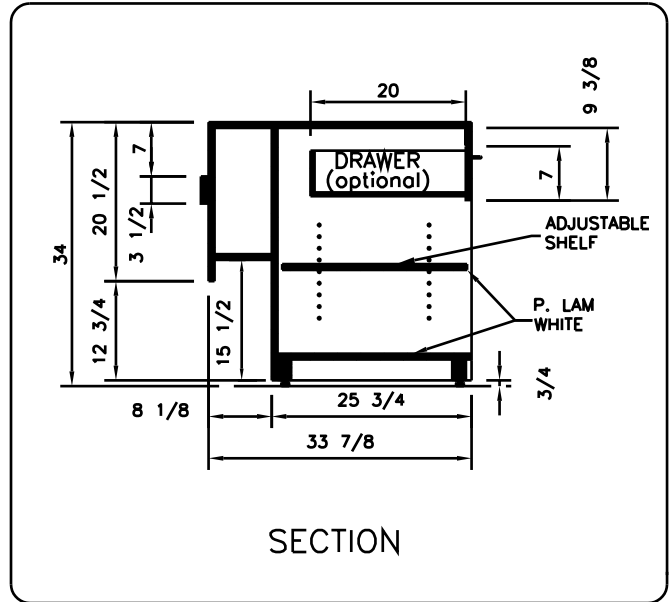
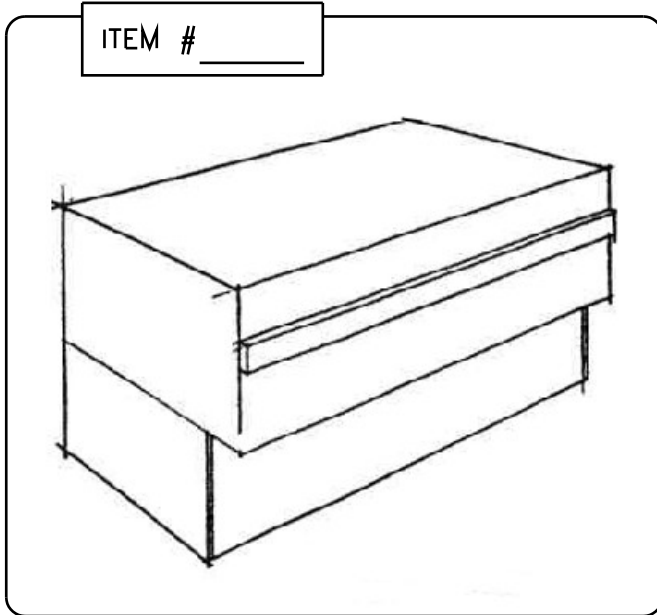


# The Diamond 52 Series

## CNT-CASH COUNTER



SPECS: 3/4" Plywood counter matching the adjacent showcase(s) with plastic laminate finishing.

### FINISHING

Standard  
Optional

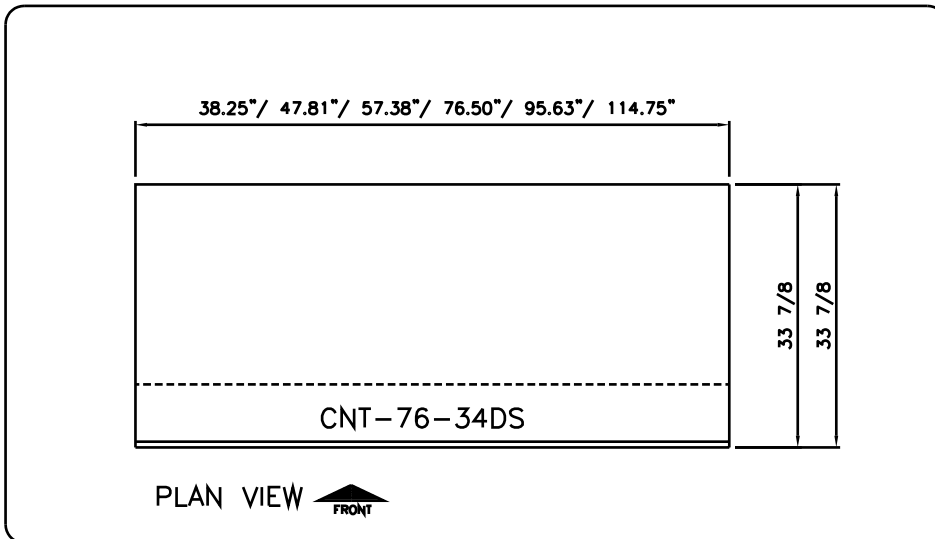
#### END PANELS/DECOR BD/KICKBD

- Pl. Laminate on Plywood
- Maple, Cherry, Oak Veneer
- Stainless Steel

#### TOP

- Plastic Laminate
- Maple, Cherry, Oak Veneer
- Stainless Steel
- Solid Surfacing\*

\*Solid surfacing is 1/2" material from Corian, Surell, or Avonite. Ask Factory for availability.



MODEL	LENGTH in mm			
<input type="checkbox"/> CNT-38-34 DS	38.25" 972			
<input type="checkbox"/> CNT-48-34 DS	47.81" 1214			
<input type="checkbox"/> CNT-57-34 DS	57.38" 1457			
<input type="checkbox"/> CNT-76-34 DS	76.50" 1943			
<input type="checkbox"/> CNT-96-34 DS	95.63" 2429			
<input type="checkbox"/> CNT-115-34DS	114.75" 2915			