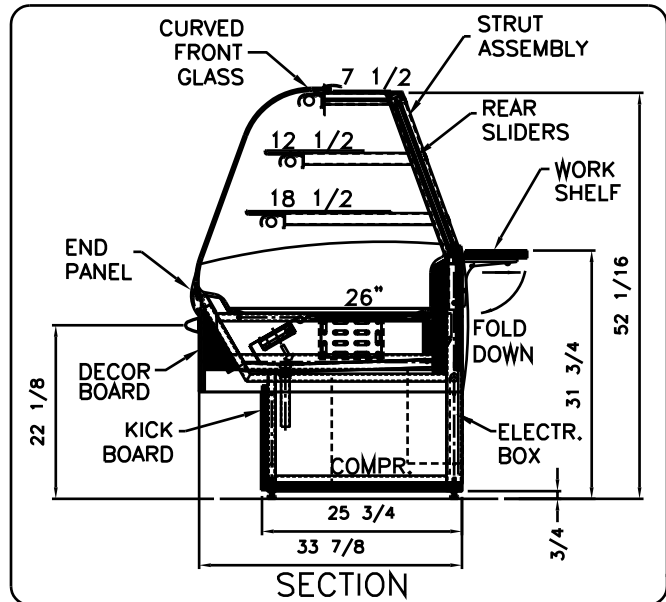
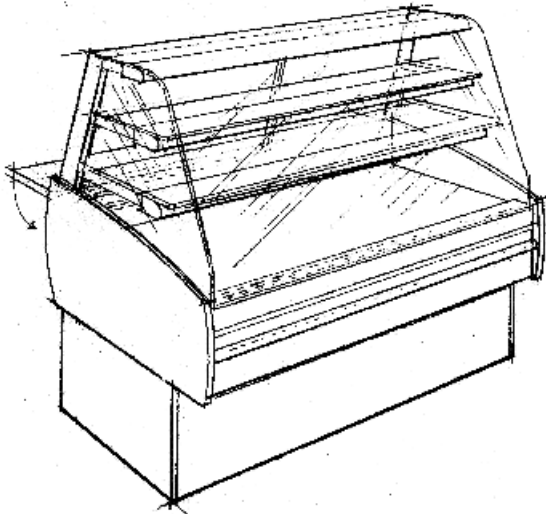


The Diamond 52 Series

RST-REFRIGERATED STANDARD

ITEM # _____



SPECS: Aluminum frame; leveling legs; series 300 stainless steel interior; epoxy point upper structure; anodized aluminum trim; .25 tempered shelf; end and front curved glass; tilt-out front glass STD.; lights w/ spectrum sleeves all shelves; laminated plywood finish; self-contained (R134a) w/ hot gas evaporator or remote; refrigerated cases are fitted with a defogging system that will keep the front glass clear of moisture in a controlled environment not exceeding 75°F and 55% relative humidity. ETL sanitation listed to NSF 7.

	Standard	Optional
EUROPEAN CURVED GLASS		
Tilt-Out Front Glass	<input type="checkbox"/>	
Lift-Up Front Glass		<input type="checkbox"/>
Non-Glare Glass		<input type="checkbox"/>

UPPER STRUCTURE		
Epoxy Point - White	<input type="checkbox"/>	
Epoxy Point - Black	<input type="checkbox"/>	
Epoxy Point - other colors		<input type="checkbox"/>

ALUMINUM TRIM		
Chrome Anodized	<input type="checkbox"/>	
Brass Anodized	<input type="checkbox"/>	
Epoxy paint colors		<input type="checkbox"/>

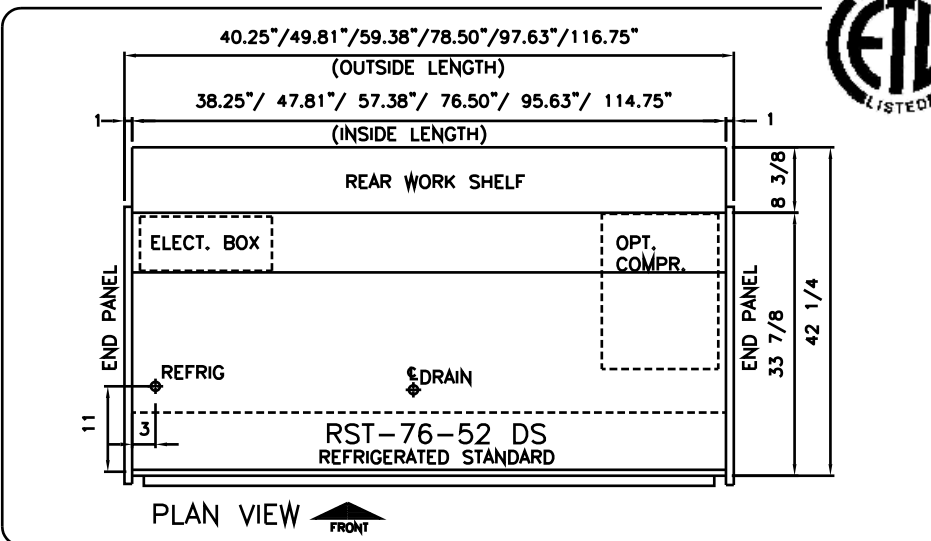
END/DIVIDER GLASS		
1/4" Tempered	<input type="checkbox"/>	
1/4" Temp.-Mirror Film		<input type="checkbox"/>

SLIDING DOORS		
Clear Plexi	<input type="checkbox"/>	
Plexi w/ Mirror Film		<input type="checkbox"/>

END PANELS/DECOR BD/KICKBD		
PI.Laminate on Plywood	<input type="checkbox"/>	
Maple, Cherry, Oak Veneer	<input type="checkbox"/>	
Stainless Steel		<input type="checkbox"/>

FOLD-DOWN REAR WORK SHELF		
Wilsonart Fr. White	<input type="checkbox"/>	
Saniboard	<input type="checkbox"/>	
Surell	<input type="checkbox"/>	
Stainless Steel		<input type="checkbox"/>

EQUIPMENT		
Defogging System	<input checked="" type="checkbox"/>	
Humidifier	<input type="checkbox"/>	
Self-Service Doors	<input type="checkbox"/>	



MODEL	LENGTH in mm	VOLTAGE	AMPS REMOTE <input type="checkbox"/>	AMPS SELF-CONT. <input type="checkbox"/>
<input type="checkbox"/> RST-38-52 DS	38.25" 972	115V/1/60	3.1	13.1
<input type="checkbox"/> RST-48-52 DS	47.81" 1214	115V/1/60	3.1	15.1
<input type="checkbox"/> RST-57-52 DS	57.38" 1457	115V/1/60	3.3	15.3
<input type="checkbox"/> RST-76-52 DS	76.50" 1943	115V/1/60 230V/1/60	6.2	6.7 8.7
<input type="checkbox"/> RST-96-52 DS	95.63" 2429	115V/1/60 230V/1/60	6.2	6.7 8.7
<input type="checkbox"/> RST-115-52DS	114.75" 2915	115V/1/60 230V/1/60	6.6	7.1 8.7