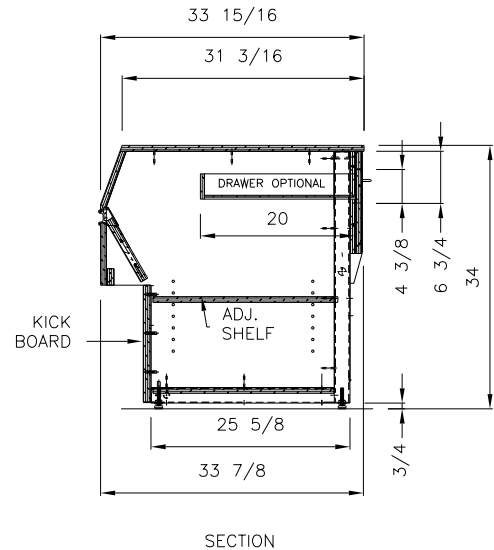
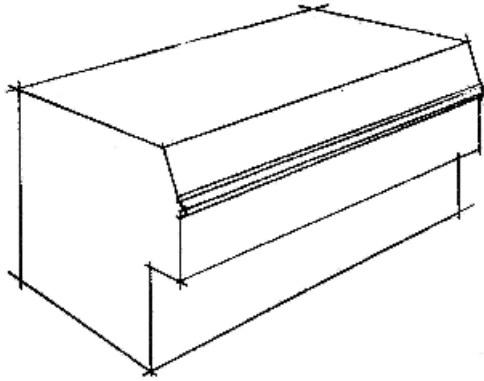


The Ekomax Series

CNT-CASH COUNTER

ITEM # _____



SPECS: 3/4" Plywood counter matching the adjacent showcase(s) with plastic laminate finishing.

FINISHES

Standard
Optional

END PANELS/DECOR BD/KICKBD

- Pl.Laminate on Plywood
- Maple,Cherry,Oak Veneer
- Stainless Steel

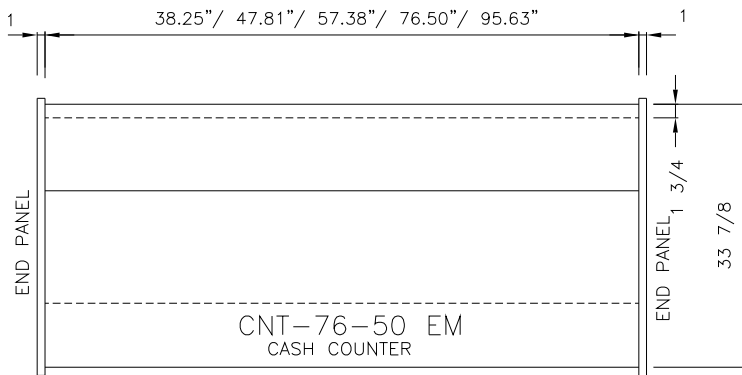
DRAWER

- Plastic Laminate
- Maple,Cherry,Oak Veneer

TOP

- Plastic Laminate
- Maple,Cherry,Oak Veneer
- Stainless Steel
- Solid Surfacing*

*Solid surfacing is 1/2" material from Corian, Surell, or Avonite. Ask Factory for availability.



PLAN VIEW 

MODEL	LENGTH in mm			
<input type="checkbox"/> CNT-38-34 EM	38.25" 972			
<input type="checkbox"/> CNT-48-34 EM	47.81" 1214			
<input type="checkbox"/> CNT-57-34 EM	57.38" 1457			
<input type="checkbox"/> CNT-76-34 EM	76.50" 1943			
<input type="checkbox"/> CNT-96-34 EM	95.63" 2429			
<input type="checkbox"/> CNT-115-34EM	114.75" 2915			