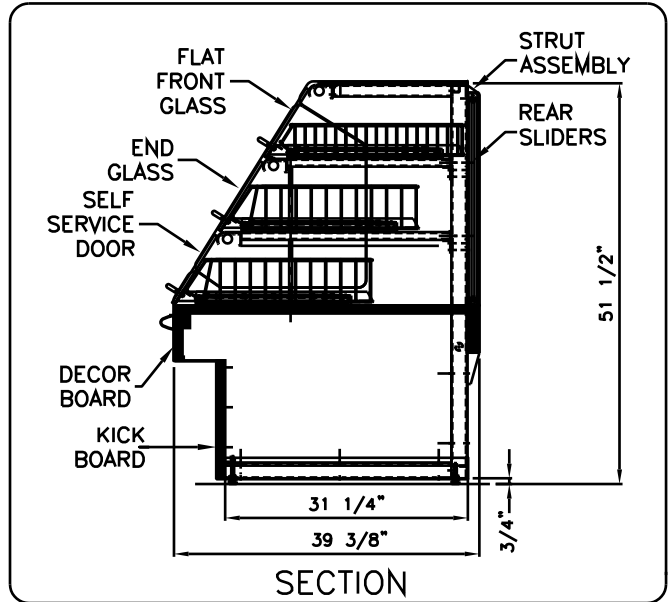
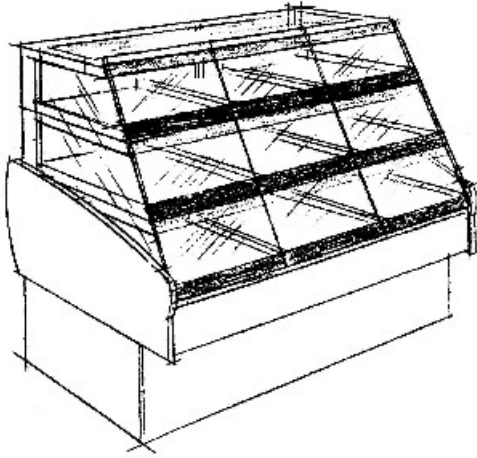




The Ekomax XF Series

SSD-SELF SERVICE DRAWER

ITEM # _____



SPECS: Aluminum frame and strut, epoxy pointed; leveling legs; anodized aluminum trim; .25 tempered end and front flat glass; lights w/ spectrum sleeves; 3/4" plywood finish millwork. ETL sanitation listed to NSF 2.

FLAT GLASS

Drawer Front Glass

UPPER STRUCTURE

Epoxy Point - White
 Epoxy Point - Black
 Epoxy Point - other colors

ALUMINUM TRIM

Chrome Anodized
 Brass Anodized
 Epoxy paint colors

END/DIVIDER GLASS

1/4" Tempered
 1/4" Temp. - Mirror Film

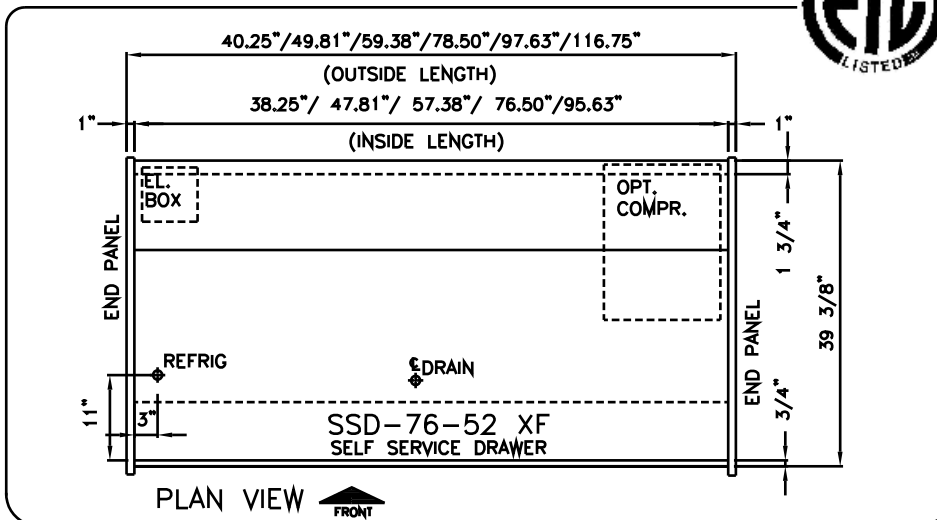
SLIDING DOORS

Clear Plexi
 Plexi w/ Mirror Film

END PANELS/DECOR BD/KICKBD

Pl.Laminate on Plywood
 Maple, Cherry, Oak Veneer
 Stainless Steel

Standard
Optional



MODEL	LENGTH in mm	VOLTAGE	AMPS REMOTE <input type="checkbox"/>
<input type="checkbox"/> SSD-38-52 XF	38.25" 972	115V/1/60	3.1
<input type="checkbox"/> SSD-57-52 XF	57.38" 1457	115V/1/60	3.3
<input type="checkbox"/> SSD-76-52 XF	76.50" 1943	115V/1/60 230V/1/60	6.2
<input type="checkbox"/> SSD-96-52 XF	95.63" 2429	115V/1/60 230V/1/60	6.2
<input type="checkbox"/> SSD-115-52XF	114.75" 2915	115V/1/60 230V/1/60	6.2