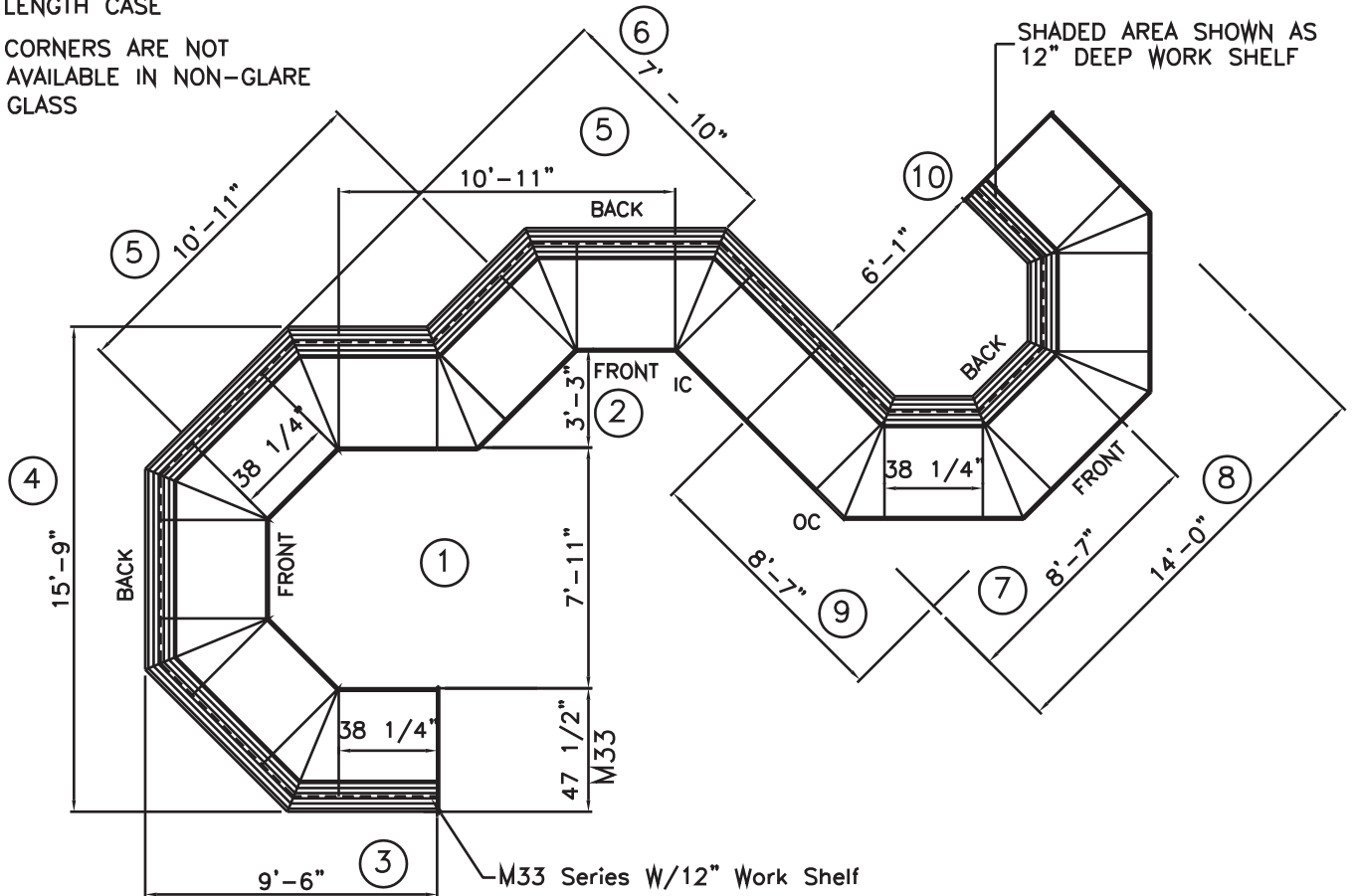


NOTE:

- ALL 38 1/4" UNITS SHOWN IN THIS LAYOUT CAN BE REPLACED WITH ANY AVAILABLE STANDARD LENGTH CASE
- CORNERS ARE NOT AVAILABLE IN NON-GLARE GLASS



PLAN VIEW

- | | |
|---|--|
| ① SMALLEST 90° INSIDE CORNER MEASURED AT FRONT | ⑥ SMALLEST 2 X 45° DOG LEG MEASURED DEPTH |
| ② SMALLEST 180° INSIDE CORNER MEASURED AT FRONT | ⑦ SMALLEST 90° OUTSIDE CORNER MEASURED AT FRONT |
| ③ SMALLEST 90° INSIDE CORNER MEASURED AT BACK | ⑧ SMALLEST 180° OUTSIDE CORNER MEASURED AT FRONT |
| ④ SMALLEST 180° INSIDE CORNER MEASURED AT BACK | ⑨ SMALLEST 90° OUTSIDE CORNER MEASURED AT FRONT |
| ⑤ SMALLEST 2 X 45° DOG LEG MEASURED LENGTH | ⑩ SMALLEST 180° OUTSIDE CORNER MEASURED AT BACK |