



## THE NEW OMEGA SERIES SPECIFICATIONS

The NEW OMEGA series is Arctica's newest and complete entry level European style showcase line and is available in up to five lengths and four heights. **45 and 90 degree inside and outside corner cases are NOT available!**

### **CONSTRUCTION:**

**Sturdy, indestructible baltic plywood construction with aluminum support structure.** (Baltic plywood, also known as Russian Plywood, has no internal voids!)

### **INTERIOR FINISH:**

All metal parts in the refrigeration compartment are made of 300 series stainless steel. Air ducts and inlays are made of stainless steel, painted black or white.

### **REFRIGERATION SYSTEM:**

The display area is refrigerated on all levels (shelves) between 34 and 40F based on max. 80F ambient temperature. Slow moving fans and an oversized evaporator coil with 5000 square inches of cooling surface per foot guarantee gentle cooling with up to 75% humidity. For higher humidity levels refer to **Arctica's humidification system**.

### **SELF-CONTAINED REFRIGERATION: (optional)**

All Arctica cases are available for self-contained applications. The refrigeration system is based on CFC free R134a and has a built-in hot gas evaporator (no drains necessary). Compressors up to 1/2 HP are wired directly to Arctica's electrical control box (115V); 3/4 HP compressors require a separate circuit (220/208) to the main panel.

### **HUMIDIFICATION SYSTEM: (optional)**

Arctica's unique self-cleaning ultra-sonic humidification system is the first maintenance free humidifier on the market. With up to 90% humidity it provides the ultimate in product freshness, reducing dry-out losses significantly and extending product shelf life by more than 50%.

**NOTE:** An Arctica water treatment system for the supply line is recommended; in hard water conditions its mandatory. **Do not sell a humidifier without floor drain!**

### **DEFOGGING SYSTEM: (standard)**

All refrigerated service cases are automatically fitted with a defogging system. The defogging system will keep the front and top glass clear of moisture if store conditions don't exceed 75F and 55% relative humidity.

### **COLOR CORRECTED LIGHTS: (standard)**

All NEW OMEGA cases are standard equipped with two lights, protected with SPECTRUM sleeves to enhance the natural look of the product on display. The SPECTRUM sleeve provides a true color rendition, glare reduction and UV protection and works with a standard cool white fluorescent light.

### **EXTERIOR FINISHING:**

All exterior components (work shelves, decor boards, kick boards, end panels) are made of first grade plywood for maximum durability, covered with your choice of plastic laminates. (See Standard Plastic Laminate Sheet for details)



## THE NEW OMEGA SPECIFICATIONS & FINISHES

### **LENGTH & HEIGHT:** (mm in brackets)

- 38.25" (972), 47.81" (1214), 57.38" (1457), 76.50" (1943), Self-service also in 95.63" (2429)
- Add 1" (25) for each end panel.
- Service case heights: 52" (1321) and 47" (1194)
- Self service case heights: 47" (1194), 52" (1321), 60" (1524), 74" (1880)
- **CORNER CASES are NOT AVAILABLE in this series.**

### **CURVED FRONT GLASS:** (standard)

- Tempered .25" curved glass, standard tilt-out (tilt forward) **No lift-up available!**

### **END GLASSES:** Tempered glass, .25", clear (see through mirror optional)

### **SHELVES:** Tempered glass, .25", height & angle adjustable, (Wire shelves or Stainless steel shelves optional)

### **SLIDING DOORS:** 3/8" pet G plexi glass in aluminum frame, mirror film optional.

### **UPPER STRUCTURE / STRUT ASSEMBLY:**

- Black or white epoxy powder coated standard.

### **LIGHT CANOPIES / GLASS CLAMPS:**

- Brass or chrome polished anodized aluminum standard.

### **DECOR & KICK BOARDS, END PANELS & WORK SHELVES:**

- Plywood, choice of 8 standard plastic laminates (see Color Chart)
- Other plastic laminates optional (see option list).
- Fold down work shelf surfaces also available in Sani board (white) or Stainless steel.

### **INLAYS / BACK PANELS:** Black or white epoxy powder coated steel. (brushed stainless steel inlay & mirror finished stainless steel back panel optional)

### **FLUORESCENT LAMPS:**

- T8 cool white with SPECTRUM color correcting and UV protecting security sleeve.

### **SANITATION APPROVALS:**

All Arctica showcases are **ETL sanitation listed to NSF standards 2, 4 and 7.**

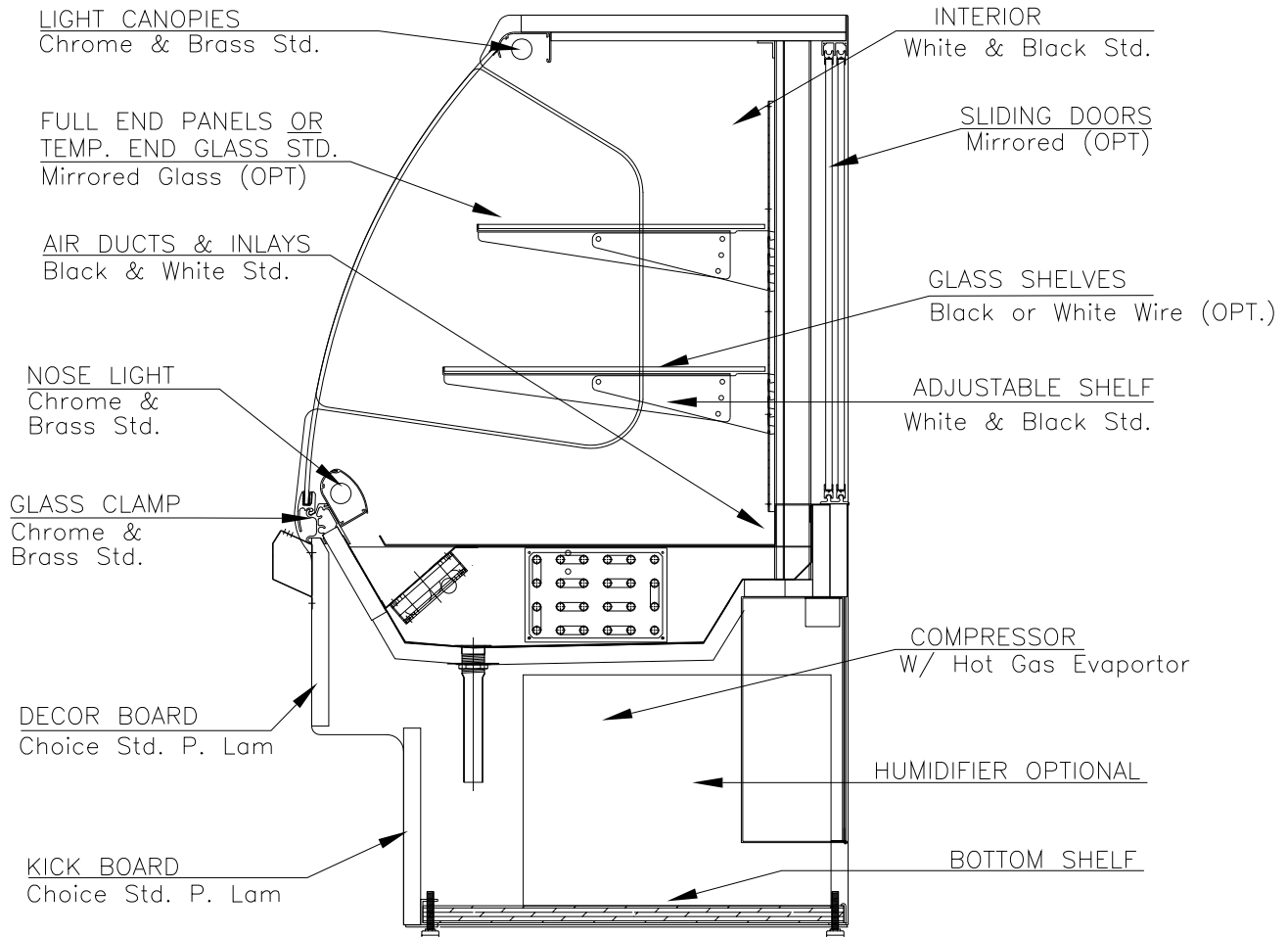


### **WARRANTY:**

- All Arctica products are covered by a **ONE YEAR PARTS & LABOR** warranty.
- Refrigerated cases ordered with self-contained refrigeration system are automatically covered for an **additional four (4) years parts replacement for the motor compressor.**  
(For more information see under General Information)

# The Omega 2005 Series

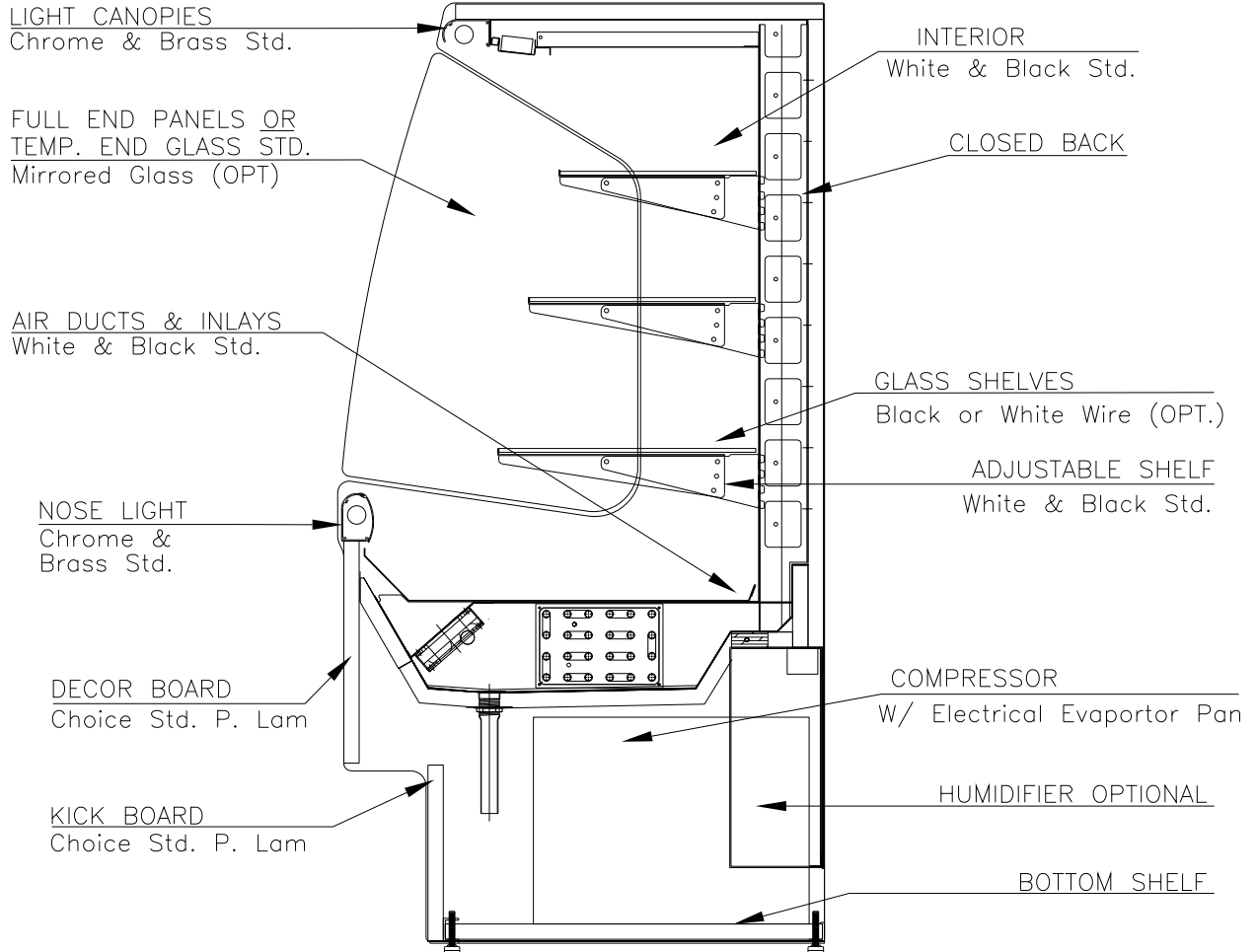
Standard Specifications & Finishes



## RH3-REFRIGERATED HIGH VOLUME

# The Omega 2005 Series

## Standard Specifications & Finishes



## RSS-REFRIGERATED SELF SERVICE